

Session Leader Notes

Part 5: The environmental impact of waste

This lesson plan provides an engaging, interactive way to teach Key Stage 1-2 students about the environmental impact of waste. It uses visuals, hands-on activities, and discussions to help students understand the consequences of waste and how they can play a role in reducing, reusing, and recycling.

Recommended for:

Key stage 1-2 (Ages 5-11)

Session duration:

60 Minutes

Objectives

By the end of this lesson, students will:

1. Understand how incorrect waste disposal affects the environment, ecosystems, and wildlife.
2. Learn about the impact of waste on landfills, pollution and plastic in oceans.
3. Recognise the importance of reducing, reusing, and recycling to protect the environment.
4. Be able to explain the long-term effects of waste on the planet and how we can make a positive impact.

Recommended group rules

- Listen to each other.
- Treat each other with respect.
- Engage with and enjoy the learning.

Materials (what you need)

- **Provide at the start of the lesson:** Whiteboard and markers for answering questions.
- **For Slide 12:** Wasting Away Decomposition Times Activity Sheet,
A pair of scissors for each student.
- **To End:** Certificate for all students for completing their Waste Management training.

Technical requirements

- A good standard of audio and visual for the group size for the short video on slides 5 and 25.

Lesson Outlines

Part 5: The environmental impact of waste

1. Introduction to waste and its environmental impact (15 minutes)

Start with a question: "How does our waste affect the environment?"

"How does our waste affect animals on our planet?" and

"Why should we care about waste management?"

Introduce the concept of waste impact:

- Explain how waste that is not disposed of properly (placed in the wrong bins or left as litter on the streets) can have a harmful impact on the environment, especially if it ends up in landfills, rivers, or the ocean.
- Discuss how items like plastic can take hundreds of years to break down, and this leads to pollution and harm to wildlife. For example, animals might eat plastic or get trapped in it.

Video:

- Show a short video that demonstrates the effects of pollution on the environment, such as litter ending up in oceans.

2. Landfill and pollution (15 minutes)

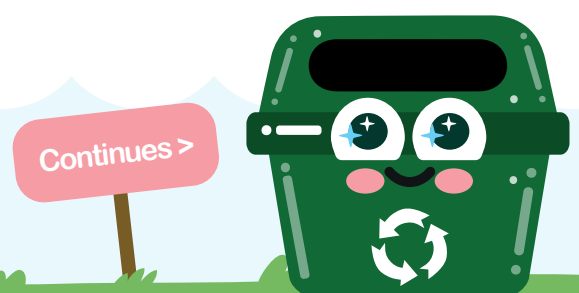
What about items that can't fit in our household bins?

- Explain how sometimes we have waste that cannot go in any of our household bins such as old furniture, fridge freezers, batteries, mobile phones and vapes etc.
- Discuss how when people are unsure what to do with these things they sometimes put them in their black bin, burn them in garden fires or even dump them on the streets themselves (this is known as fly tipping and is illegal).

Types of pollution:

Discuss the different types of pollution caused by waste:

- **Air pollution:** Harmful gases released from burning waste.
- **Water pollution:** Waste that gets into rivers, oceans, and lakes.
- **Soil pollution:** Waste that contaminates the earth and harms plants and animals.



3. Activity - 'Wasting Away' card game (15 minutes)

- **Setup:** Print out the cards with different waste items (plastic bag, glass, tin cans) and the set with decomposition times (e.g., 10–20 years) and get the students to cut them out.
- **Activity:** Individually or in small groups, get the students to match the waste items to their decomposition times.
- **Discussion:** Highlight which materials are the biggest problems and why reducing or reusing matters more than just recycling.

Answers revealed on the next slide.

- Go through the different items and discuss the decomposition times with the class.

So, what do we do with this waste?

- Discuss how waste we cannot recycle can be taken to special bins in supermarkets or to the Household Waste Recycling Centre – identify where these sites are in the city.

4. Wrap-up and conclusion (5 minutes)

Recap key points:

Review the main ideas discussed in the lesson:

- Improper waste disposal can harm the environment, animals, and ecosystems.
- Landfills, pollution, and plastic waste are major issues.
- Reducing, reusing, and recycling can help protect the planet.

Certificate on completion:

At the end of the presentation you will find a short congratulations video that is to be played to the class.

Certificates have also been provided to present to the students for completing their Waste Management training.

Reflection for Teachers:

1. Make sure to gauge the students' level of understanding by the end of the lesson and adjust future lessons if needed to further explore waste management and sustainability.
2. Keep the activities interactive and practical to ensure students can relate the lesson to their everyday lives.
3. Ask students how they feel when they see images of polluted environments / animals stuck in our waste and discuss why it's important to take care of our planet.
4. Discuss household waste, the impact in Hull and the East Riding, and how little waste that can be recycled actually is recycled.